

Gas Distribution Mains Location arrangements for UIP/GT connections UIP/GT Briefing Note 11

1. Introduction

Where a Utility Infrastructure Provider (UIP) or Gas Transporter (GT) experiences difficulty in locating National Grid gas distribution mains or finds that mains are inaccurately recorded contract terms specify the commercial arrangements in place. This briefing note has been developed to clarify the procedural arrangements.

2. Overview

Where a UIP or GT experiences difficulty in locating National Grid gas distribution mains National Grid will provide assistance and in certain cases make payments available for additional works in accordance with contract terms.

UIPs and GTs should undertake reasonable initial site investigations before contacting National Grid. Appendix A provides a process flow showing the key procedural interfaces between the UIP/GT and National Grid for requesting further assistance and confirming any payments required under the relevant contract terms . Appendix B provides more detailed procedural clarification.

In all cases reference should be made to the relevant contract terms for the work being carried out. The current contract terms are as follows:

- i). General Conditions of Contract for a Self Lay Pipe [System] Not Exceeding 2,196,000 kWh
- ii) Authorisation and Connection Conditions for New self Lay Pipes Above 2,196,000 kWh and Maximum 7 Bar
- iii) General Conditions of Contract For Site Engineering Works For Connected Offtake System
- iv) UIP/IGT Connection, Service Disconnection and Service Alteration Agreement

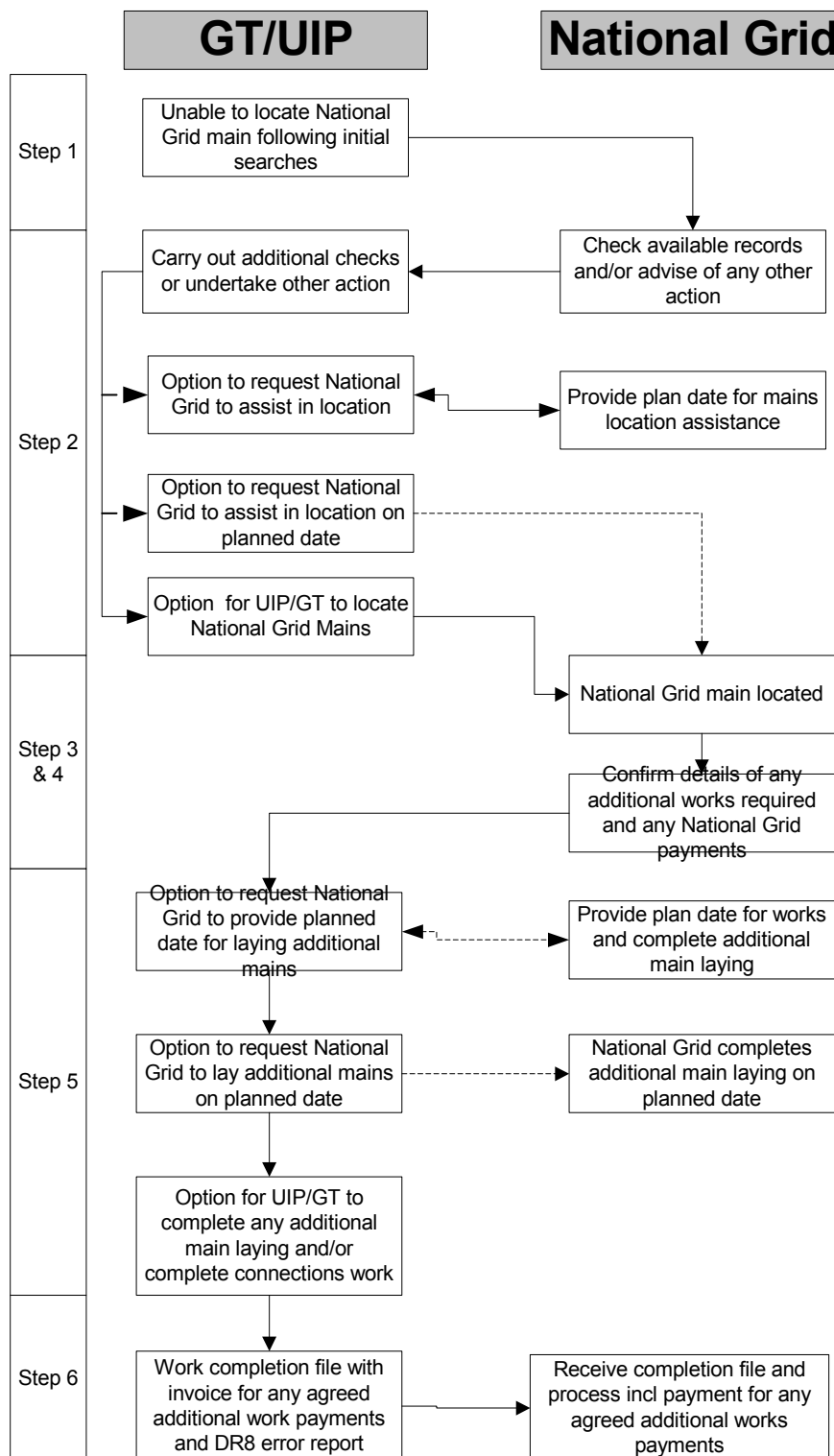
3. Contract changes

A number of contract changes have been developed to improve the contractual arrangements in place. Notification of revised contract terms will be made to UIP and GT customers by separate letter.

4. Implementation

Implementation of this briefing note will apply for all requests received after close of business on 31st August 2005

Appendix A – Gas distribution mains Location Process Flow



Appendix B – Detailed Process

1. The UIP/GT should undertake reasonable site investigations in the following order:
 - Carry out visibility checks e.g. valve/syphon boxes on the route of the main, reinstatement patches on the route of gas distribution mains and services to try and identify the line of the main for trial holes. Checks should be made to establish any background geography changes, which may have taken place since the plan was produced.
 - Initial trial hole - Excavate across the full width of the footpath where the main is shown in the footpath. Excavate in the carriageway where the main is shown in the carriageway. Trial hole depth should be 1.2m
 - Trace adjacent or opposite existing services and/or call the National Grid Network office (published post acceptance contact) to check available records. NB Advice can be requested from the network office at any point during the process.
 - Second trial hole - Excavate on the existing service at the expected gas distribution mains location in the footpath or road.
 - Third trial hole – Excavate on the expected gas distribution mains location for connection based on previous searches and information.
2. In cases where the main cannot be located in accordance with the above the UIP/GT should make contact with the National Grid office (published post acceptance contact) for assistance, providing a plan of the works undertaken which clearly indicates the location of trial holes excavated. National Grid will check any available records and identify further action to be taken which may include:
 - Suggesting an alternative trial hole location
 - Authorising an alternative point of connection including specifying the size of main to be laid (Payment for additional gas distribution mains would only apply where the gas distribution mains record was inaccurate by +/- 3m. Any payments would be agreed as in section 4)

Where the UIP/GT does not wish to carry out any additional trial hole works, National Grid would provide a timescale for a team to attend site to assist in location of the main free of charge. A response will be made within 4 hours of receipt of the initial call, indicating the lead time for attending site.

3. Once the location of the National Grid main has been determined the UIP/GT should contact the National Grid office (published post acceptance contact) to confirm any additional pipelaying works to be carried out and any National Grid payments for this work. The UIP/GT would need to contact the National Grid office, providing a plan of the proposed position of connection to obtain authorisation for the additional works.
4. National Grid will confirm the diameter of any additional pipework which needs to be laid. Where the National Grid main has been found to be inaccurately recorded by more than 3m from its indicated position National Grid will confirm a price per metre to be paid to the UIP/GT to pay for the additional mainlaying. This will be a single rate paid at a premium, providing some contribution towards other costs. Any additional gas distribution mains laid would be adopted by National Grid and would require a completion file for the works.

For self connections where the main located was a larger or smaller diameter than the recorded main, or a different material, National Grid would also confirm any additional price to be paid for any marginal cost of installing the connection. This

would be based on any marginal cost difference from National Grid's contract and material rates. Any costs will be confirmed by facsimile to the UIP/GT job contact.

5. Where the UIP/GT did not want to complete the additional pipelaying works they could request National Grid (published post acceptance contact) to complete the works free of charge. Timescales would be provided for a National Grid team to attend site to lay the pipework. A response should be made within 4 hours of receipt of the call, indicating the lead time for attending site.
6. The UIP/GT would need to invoice for any additional works on completion in line with the National Grid agreed price, providing a completion file for additional gas distribution mains laid, and a DR8 error report.